



COMPANY PROFILE

INNOVATIVE HORIZONZ



CEO Message

Having spent many wonderful years in this country, I have witnessed the highs and lows of the global and countrywide economy first hand. Even then, I can safely state that the UAE has always been a trendsetter. In the current economy, as the slowdown in emerging markets starts to relay its effect globally again, the UAE remains poised for growth slowly but surely. This has only been made possible under the wise and visionary leadership of the UAE.



With all the swift growth that this wonderful country has experienced in the last 15 years, conventional infrastructure is no longer enough to meet habitation needs. We anticipated this evolution long ago and have been keenly adding value by delivering modern and futuristic roads/ infrastructure developments, in line with the UAE leadership's vision.

We are proud to say that so far, all our delivered projects resonate state-of-the-art advances in Roads & Infrastructure Development in the UAE and GCC.

Our distinguished team of Architects, engineers & planning professionals are relentlessly pursuing advancements in key infrastructural developments.

Finally, I would like to state that it is AEC's goal to engineer projects that would modernize the entire outlook of roads and infrastructure sector in the UAE and GCC .

Wageeh S. Aqleh

Table of Content

Vision and Mission	1
Preface	2
Our Values	3
Core Values	5
Strategic Aspirations	6
Our Services	7
Highways and Bridges.....	9
Utilities and Infrastructures.....	10
Landscaping and Public Ream	10
Transport Planning	11
Urban and Master Planning	12
Architecture & Building Engineering	13
Project and Construction Management	14
Contracts & Cost Consultancy	14
Our Approach	15
Integrated Management Systems - Capability Statement	17
Quality Assurance and Project Delivery	18
Health, Safety and Environment.....	19
Sustainability.....	21
Corporate Social Responsibility.....	23

Our Achievements	25
Our Clients	63



Vision

To provide our clients with safe, sustainable, and innovative solutions and services that comply with local and international standards.

Mission

To strive to accomplish a professional and creative environment for our staff to be able to apply their knowledge and expertise in a nurturing atmosphere.

Preface

Aqleh Engineering Consultant (AEC) was established in 2006 in Dubai, UAE by a group of experienced engineers and architects. Since then, it has become one of the leading names in Engineering Consultancy in the region as a provider of Civil Engineering and Architectural Services. Having a humble start with a small group, now it employs over a hundred professionals, including Engineers, Architects, Cost Consultants and Construction Management Professionals.

AEC is offering a wide range of services that includes Highways and Bridges Design, Utilities and Networks Design, Contracts and Cost Consultancy, Construction and Program Management, Architectural and Electromechanical Design, Urban and Master Planning, Landscaping, and Transportation Planning, aiming to cater for all our clients' needs to be provided in one integrated offer.

Applying innovative, pioneer and sustainable solutions, while empowering our employees, along with the thoughtful contribution of our clients to achieve the most effective designs, have proven to be a successful method to achieve AEC's objectives. For that goal, we ensured that our systems and resources had been always governed by ISO 9001:2015 for the Quality Management Systems, and ISO 14001:2015 and OHSAS 18001:2007 for the Occupational Health and Safety for Environmental Management Systems.

Utilizing our extensive experience have resulted a great success in delivering many significant projects within the United Arab Emirates for various Clients, such as RTA, Nakheel, Meydan, DMCC, and many more whom we enjoy exceptionally close business relationships, and where we delivered for them various key projects.

Our Values





Core Values

Clients

At AEC, our success is measured by the success of our clients. We are setting industry standards for our clients' services and solutions. We are passionate about solving client's problems and exploring new opportunities with them. AEC is distinct from others by understanding client's specific needs, then exceeding their expectations.

Integrity

AEC manages to grow as a leading, reputable firm in this business, which makes ethical decisions, keeps commitments, and treats others with mutual respect, and trust from all.

Employees

Our success was never possible without engaging respect, and encouraging our employees' ideas, diversity, and culture. AEC's employees are the heart of our business, and the reason behind our achievements.

Innovation

AEC goes the extra mile to put the utmost effort to innovate creative, new, or better ways to provide our expertise in all dimensions of our business. Creativity, exploration, and imagination are keys to our approach to our work. Our offered innovative solutions are realistic and fulfilling the precise requirement of our clients.

Agility

The enthusiastic and well-trained workforce of AEC embraces change, flexibility, and adaptation to the rapidly evolving engineering market. In AEC, we strive to anticipate changes in market drivers and works with our clients and employees to adapt to those changes. It enables us to provide quick solutions to execute our clients' prestigious projects seamlessly within the planned project timeframe.

Strategic Aspirations

Expansion in the MENA Region:

We are on a mission to expand our services in major parts of the Middle East and North Africa Region. The initial phase of this development strategy will include stretching our operations to the capital city of the UAE through new offices in Abu Dhabi. This phase also includes further expansions to cater for the Northern Emirates.

The next phase will include branches for AEC to be launched in the dominant countries in GCC, such as Saudi Arabia, Qatar, and Oman, in addition to launching a subsidiary of AEC in Egypt.

Collaboration with International Engineering Firms:

AEC believes in teamwork and to develop, strengthen, and enrich our experience and services to our clients, we are currently in consultation with major International Engineering Firms to move towards alliances, where we will be working together towards being our clients' first choice.

Becoming Clients' One-Stop Shop:

AEC is determined to be a prime destination for all engineering and architecture fields in the Middle Eastern region. Adding new sectors to our engineering consultation services is a major part of achieving this feat. We've grown with the trust our clients have in our services. We believe by expanding our innovative offering AEC will be fully equipped to provide all types of engineering integrated solutions that suit our clients' needs.



Our Services







Highways and Bridges

As the demand for highways and bridges increases, AEC is ready to help our clients with comprehensive civil, structural, and transportation engineering skills. We tailor our services to each project, helping our clients in delivering design drawings, budgeted costs and material estimates, meet critical milestones, and achieve their expectation for the completed project.

Our expertise, innovation, and creative approach to solving highway and bridge design problems has produced top-grade highways and bridges that ensure a safe and seamless traveling environment for end users.



Utilities and Infrastructures

We take the challenge of producing outstanding infrastructure designs. It is a must for a reputed engineering consultancy to satisfy the utility service demands of the public as per the identified standards set by the local utility authorities. AEC's utility team comprises of qualified engineers that handle the dry and wet infrastructure services. Dry services include the design of electrical power, street lighting, CCTV, and telecommunication services. Wet services, include the design of potable water, storm water, sewer, irrigation and fire fighting systems.



Landscaping and Public Realm

When it comes to landscaping and public realm we believe that these elements need to be given a great deal of design attention. Working holistically, we help shape developments that are fully integrated with the surrounding urban area, balancing the visual identity, cultural relevance, heritage, and long-term aspirations of the communities they serve.

AEC have a proven track record in delivering landscaping projects that saves significant cost, and minimizes waste and disruption the local environment, while fully supporting the aspirations of local communities.

Transport Planning

The movement of people and vehicles plays a key role in development proposals. Therefore our clients proposal's transport implications need to be identified and dealt with at an early stage of the planning process. Our experts produce Transport Impact Studies that identify measures that may be required to deal with predicted transport effects. These range from slight modifications of the existing highway to major new transport infrastructure. They also include ways of improving accessibility and safety for all users, particularly pedestrians, cyclists, public transport users and the mobility impaired.

Transport modelling plays an integral part of the appraisal process. We have continued to develop our transport modelling capabilities and can offer comprehensive modelling services, including wide-area network assignment modelling and micro-simulation techniques. We have extensive experience in developing models using VISUM and VISSIM software.





Urban and Master Planning

Movement is essential to the growth and longevity of sustainable communities and that successful places have a clear integrated movement framework and are developed at the human scale. As societies become increasingly aware of the need for coherent and sustainable living environments, effective urban planning and development has become a high priority.

AEC works closely with our clients to develop master plans usually through a workshop process to provide design advice and expertise in relation to movement issues for development projects. Our technical master planning services help develop urban areas in a holistic, integrated manner resulting in healthy, safe places in which people can thrive, communities can grow, and the environment can flourish.



Architecture and Building Engineering

The architecture industry is getting more challenging and demanding in terms of budget and schedule. Nowadays, every client seems to be striving for uniqueness in design to stay ahead of the competition, and they are not willing to compromise on any of their needs including green, sustainable structures.

We welcome the challenge. By carefully addressing the client's needs, by understanding their aspirations and do our best to translate it into reality. Our architectural team produces various innovative architectural designs for residential, commercial and other types of buildings. We also emphasize on the best quality practices such as LEED, green building, solar technology to create unique structures that are sustainable and environment-friendly.



Project and Construction Management

AEC is a leading provider of Project & Construction Management services to civil engineering infrastructure and transport schemes. Our consulting engineers manage all project and construction activities including planning, co-ordination, control and supervision from inception to completion. We are committed to fulfilling clients' needs, delivering a functional and cost-effective result.

Our project and construction managers are multi-skilled professionals with experience in most design disciplines and comprehensive knowledge of managing various types of contract. We are proficient in all areas of project and construction management including planning, programming, site investigation and supervision, design management, contract administration, procurement and purchasing, and quality control and assurance. We have extensive experience in managing the interactions between the many different stakeholders within each project. Our team provides a single point of contact for all parties.



Contracts & Cost Consultancy

AEC consultancy team provides the public and private sector with a comprehensive project consultation for pre-and-post contract administration, claims management, commercial and contractual support with a focus on minimizing client risks and enhancing value.



Our Approach



Integrated Management Systems - Capability Statement

It is the policy of AEC to strive for operational excellence and supply its clients with a service that is above their expectation that complies with contractual and agreed requirements.

Operations will follow applicable rules, regulations, and legislation. The integrated management system allows normal business decision-making processes to control monitor & reduce risks and verify performance.

AEC is striving to achieve the highest management standards with emphasis placed upon managing and controlling risks. AEC delivers a high-quality product, implements highly safe working practices, protects the environment and continuously improve the skills and performance of all involved to achieve Quality Excellence in friendly working environment.

AEC is committed to enhancing client satisfaction, continual improvement, and effectiveness of the integrated management system. This integrated policy is appropriate for the organization and provides the framework for establishing objectives and targets. There is a constant drive to satisfy our clients, while always being mindful of our responsibility to our customers, employees and the community. This involves the active participation, endeavor, and ideas of all involved.

These high standards of work will be achieved by operating to a quality and environmental integrated management system that meets the requirements of ISO 9001:2015. The system is based on the attitude of AEC towards quality, industry standards, and client expectations.

Compliance with this policy, objectives, procedures and work instructions is mandatory and binding upon all working for AEC.

This Policy is communicated and understood within the organization and is available to the public, clients and interested parties and will be reviewed for continuing relevance.





Quality Assurance and Project Delivery

(ISO 9001:2015)

AEC is an engineering services provider in the professional technical and management support field. AEC is proud to provide a wide range of services that includes Highways and Bridges Design, Utilities and Infrastructure Design, Contracts and Cost Consultancy, Construction and Program Management, Architectural and Electromechanical, Urban and Master Planning, Landscaping, and Transportation Planning.

The Project Delivery System (PDS) serves as a guideline to all employees on how to approach a project. We, at AEC, takes pride in products delivered to our clients as both unique and consistent. Our PDS ensures our that products have been thoroughly revised and approved by the appropriate chain of command to deliver top quality consistent products every time. Employees within AEC easily adopt our PDS due to its easy and logical steps.

AEC implements a PDS, which will serve as the single system for project delivery for all AEC employees. It will direct employees to the specific procedures, forms, and other materials needed for their activities, as well as information to successfully manage projects and comply with Integrated Management System (IMS) requirements. PDS applies to all AEC projects.

The PDS document divides a project into four stages of delivery as follows:

- Tendering and Proposal
- Planning and Control
- Execution
- Close-Out

Each stage of those is further divided into procedures to explain the steps that should be taken to complete the required work for any proposal/project. All necessary forms for each stage are also presented at the end of each section. The forms must be completed by the concerned person to ensure proper implementation of the mandatory steps. These forms ensure proper documentation of the work being carried out, which will also be used as a future reference.



Health, Safety and Environment

(ISO 14001:2015, OHSAS 18001:2007)

It is the policy of AEC to ensure the health and safety of our employees and those around us. We aim to raise awareness in health, safety and environmental (HSE) practices throughout all activities we are involved in and in the communities around us.

AEC strives to provide facilities and operations that do not contain unreasonable risk to either our employees or the communities benefiting from our services. We are also committed to protecting the environment and its natural resources.

AEC is devoted to reducing its carbon footprint from any company related activities to the minimum, by reducing and monitoring energy, water, and any other natural resources consumption and to recycle and reduce waste. All operations will follow the applicable rules, regulations and legislation.

Our HSE Management Systems allow us to plan our business decision-making processes to control, monitor, reduce risks, and verify our performance. We will train our employees and raise awareness of the importance of health, safety, and the environment, to ensure our vision to prevent work-related illness & injuries, or damages to any property or equipment, whether it is our own or belongs to the community, and prevent serious environmental impacts by our operations.

Our employees will exercise sound judgment as to not place anyone in harm's way or endanger the environment. Employees will immediately cease activities the moment when they adversely affect health, safety or environment, and will report any accidents to their direct supervisor.



AEC will strive to always improve our HSE procedures and performance by actively listening to suggestions and ideas from our employees and customers. We will also keep a keen eye on new practices that will help us continuously improve. We will recognize those who help and contribute to improve our performance. We will meet all our clients' requirements as long as they do not conflict with our health, safety, and environment policy. We will not turn a blind eye on where no specific regulations exist but rather comply with AEC HSE policy.

These high standards of work will be achieved by operating to a safety, health, and environmental system that meets the requirements of ISO 14001:2015 & OHSAS 18001:2007. The system is based on the attitude of AEC towards quality and environment safety, industry standards and Client expectations. Compliance with this policy, objectives, procedures and work instructions is mandatory and binding upon all working for AEC.

This Policy is communicated and understood within the organization and is available to the public, clients and interested parties and will be reviewed for continuing relevance.



Sustainability

AEC cares deeply about the impact our work leaves on our world and our communities. As a global citizen we are committed to our purpose to innovate, and sustain the world's built, natural and social environments.

Our ultimate goals are derived from AEC's Core Values:

- Help our clients be more successful in a changing future.
- Operate all of our systems to reduce waste and consumption in order to maximize opportunity and innovation.
- Build an inclusive corporate culture that understands sustainability as a framework for decision making to manage risk and create opportunity.

Sustainability is an idea that transcends all of our business sectors. It is as much about how we frame the questions as it is about what we do, and it brings with it tremendous opportunities to do more with less, to create value, to prosper and to optimize conditions for human development over time.

Our strong commitment to sustainability guides our approach in everything we do, beginning with the moment we respond to a Request for Proposal and pull together the best minds and skill sets from our resources to examine the issues.



On every project AEC seeks to mitigate risk by understanding the true financial, environmental, human and social impact of our actions we can improve and protect profit margins, brand value, shareholder standing, employee satisfaction and the ability to continue to be successful in the future. Manage complexity we understand that any intervention in one system has an impact, positive or negative, on another system. Everything is interconnected and interdependent. Understanding these relationships allows us to create value by fixing today's problem while simultaneously anticipating future growth or change.

Sustainability for AEC is a business idea based on our understanding of the opportunities to create economic, social, environmental and human value while managing the risks posed by an uncertain future, AEC engages with our clients, employees, suppliers and local communities to implement transformational projects, provide thought leadership, and innovate.

An integrative idea drawing on our great diversity we collaborate with governments, local authorities, colleagues, the business community and not for profit institutions to help shape policy, approach and strategies to deliver more sustainable development in this region.

Understand cumulative effects we have the ability to examine each issue in context, not just in depth, but also in breadth to anticipate the unintended consequences and interactions and minimize risk.

Cope with uncertainty more than anything else, our clients need to be able to make the right decisions in the face of overwhelming uncertainty. With our vast range of resources, skill sets, experience and expertise across multiple business sectors, we have the ability to get the best possible answers by asking the right questions.

An operational idea to support a successful, sustainable future for our clients' business we recommend:

- Ways to reduce CO2 emissions.
- Encourage sustainable behavior in the workplace.
- Provide solutions that promote efficiency and reduce consumption.
- Minimize waste and encourage reuse and recycling wherever possible while ensuring value for money.

A corporate culture idea how we encourage our employees' passion for creating a better world and empower them to try new ideas and approaches that solve more than one problem at a time, allows us to do more with less.





Corporate Social Responsibility

AEC has a continuous commitment to behave ethically and contribute to economic development while improving the quality of the life of the workforce and their families as well as of the local community and society at large.

We believe that the successful long-term future of our business can only be achieved by working collaboratively with all our stakeholder and in their interests.

AEC is committed to managing the Social Responsibility as an employer, and professional service provider to its clients by adopting operating principles which will provide guidance on:

- Social & Community Objectives
- Ethical Issues
- People Commitment

Social & Community Objectives

We are committed to the communities in which we live and work. We understand the impacts we create on the local community in the everyday running of our business. Our direction:

- Partnering with schools wherever AEC operates.
- Encourage employees who like to involve themselves in public and charitable service.
- Give our time and expertise for free to local community groups and voluntary organizations.
- Aim to build long-term relationships with our suppliers and support small and local businesses.
- In our charitable giving, we aim to work together with charities and create a partnership that is in tune with our business values.

Ethical Issues

AEC is committed to achieving and maintaining the highest standards of ethical conduct and institutional integrity. We seek to comply with all laws and regulations, accounting standards, and ethical guidelines. We abide by a set of global values and our foremost standards of conduct are integrity and respect, collaboration and trust. Our direction:



- A Code of Business Conduct whereby our employees are expected to follow a high standard of behavior at all times, both professionally and personally.
- All employees are encouraged to report any concerns they may have about unethical, dishonest, unsafe or inappropriate behavior in the workplace.
- A zero-tolerance approach to harassment or unwanted behavior or conduct that a recipient finds intimidating, upsetting, embarrassing, humiliating or offensive, or that violates a person's dignity.

People Commitment

AEC strives to treat all stakeholders with respect and dignity. We strive to find solutions by looking at the issues together. Our direction:

- People are the bedrock of our business and we encourage lifelong learning throughout the firm. We extend this ethos to our relationships with clients.
- Respect our people and encourage their development and training.
- Aim to be a firm that is fully supportive of a diverse workforce including both gender and ethnicity.
- Consider the health and wellbeing and the work-life balance of our people.
- Aim to empower our people; we will consult and provide two-way communication for all matters.
- Recognize individual contributions and reward our people fairly.

Our Achievements





R1070 - Internal Roads in Al Qouz 2nd Area

ROADS & UTILITIES DESIGN

Roads & Transport
Authority (RTA)



AEC was awarded by Roads and Transport Authority (RTA) Roads Department the R1070 - Internal Roads in Al Qouz 2nd area along Al Khail Road and Meydan Road.

The neighborhood is approx. 70% developed consisting of existing villas, parks, mosques, and other amenities which are fully served by the electrical, water, telecom, and sewerage networks. Several internal roads including the spine collector roads are already constructed and in use, however, there are several internal roads approx. 16km are required to be constructed to serve the community.

The project, therefore, intends to complete all the remaining internal roads including street lighting, signage, drainage networks, and protection or relocation of existing utilities as per tender drawings, specification, and authority standards. The construction scope also includes the provision of the sidewalk, footpaths & soft mobility to enhance the overall environment and promote a safe pedestrian movement.

Key Services

- Design NOCs from all relevant authorities (RTA, DEWA, DM, etc.).
- Cost Consultancy and Tendering Services.
- Construction Documentation & Supervision.

Location : Dubai, UAE

Appointment : Highways; Utilities; Contracts, Cost Consultancy & Construction Supervision

Construction Value : AED 57 Million

Project Status : Ongoing

R1070 - Internal Roads in El-Lesaily, Margham and Lehbab - WO#1

Roads & Transport
Authority (RTA)

ROADS & UTILITIES DESIGN



AEC has been appointed by Roads and Transportation Authority (RTA) to carry out the comprehensive design of the internal residential roads within the three areas of El-Lesaily, Margham and Lehbab 1st. These are additional areas/scope to the original contract that was previously awarded on April 2021 for the internal roads of Al-Qouz 2nd, Dubai (R1070).

This Work Order #1 consists of design the remaining unbuilt internal roads including street lighting, and proper signage as per the latest approved design standards, drainage network. Moreover, the Scope includes the design of the roads as per the latest right-of-way and the approved typical cross sections, designing a proper footpath to enhance and improve the overall environment and promote a safe pedestrian movement.

In addition to the road design, the scope also includes the construction, relocation, adjustment and protection of the main utility networks.

Key Services

- Design NOCs from all relevant authorities (RTA, DEWA, DM, etc.).
- Cost Consultancy and Tendering Services.
- Construction Documentation & Supervision.

Location : Dubai, UAE

Appointment : Highways, Utilities, Contracts, Cost Consultancy & Construction Supervision

Construction Value : AED 95 Million

Project Status : Ongoing

R1015/3A - Various Improvements & Implementing Quick Wins in Deira

Roads & Transport Authority (RTA)

ROADS, UTILITIES & LANDSCAPE DESIGN



AEC was awarded by Roads and Transport Authority (RTA) Roads Department the R1015/3A Various Improvements & Implementing Quick Wins in Deira.

The consultancy services required for this project was to undertake the design and construction supervision for improvements to existing roads and intersections, widening of existing roads, parking, kerb lines and/ or new construction of the same and any other minor road works deemed necessary through numerous Work Orders from the RTA Roads Department.

Key Services

- Design NOCs from all relevant authorities (RTA, DEWA, DM, etc.).
- Cost Consultancy and Tendering Services.
- Construction Documentation & Supervision.

Examples of Work Orders undertaken by AEC was for “Proposed Roundabout at Al Mamzar and Al Nadha 1”; “Proposed Link Road in Nad Al Shiba 3”; “Proposed Cycle Track in Al Warqa 4th”.

Location : Dubai, UAE
Appointment : Highways; Utilities; Landscape; Contracts & Cost Consultancy
Construction Value : AED 168 Million
Project Status : Ongoing

R1015/3B - Various Improvements & Implementing Quick Wins in Bur Dubai

Roads & Transport Authority (RTA)

ROADS, UTILITIES & LANDSCAPE DESIGN



AEC was awarded by Roads and Transport Authority (RTA) Roads Department the R1015/3B Various Improvements & Implementing Quick Wins in Bur Dubai.

The consultancy services required for this project was to undertake the design and construction supervision for improvements to existing roads and intersections, widening of existing roads, parking, kerb lines and/ or new construction of the same and any other minor road works deemed necessary through numerous Work Orders from the RTA Roads Department.

Key Services

- Design NOCs from all relevant authorities (RTA, DEWA, DM, etc.).
- Cost Consultancy and Tendering Services.
- Construction Documentation & Supervision.

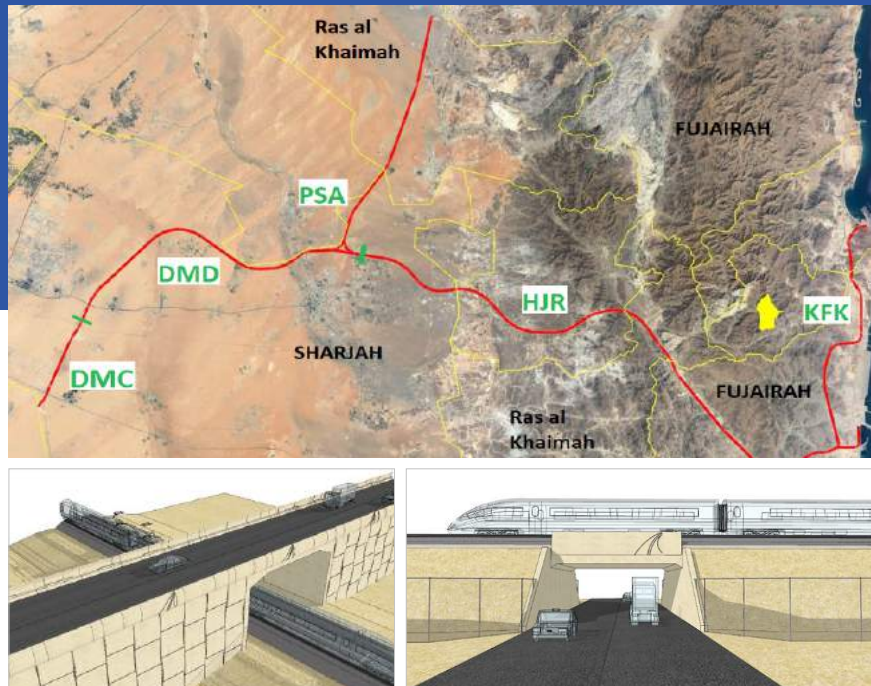
Examples Work Orders undertaken by AEC were “Improvement on Sheikh Zayed Rd (SZR) near IC-1 (Abu Dhabi & Sharjah Bound)”; “Improvement on SZR near IC-4 (Abu Dhabi Bound); “Improvement of Al Thanya St between Al Wasl & Jumeirah Rd”

Location	: Dubai, UAE
Appointment	: Highways; Utilities; Landscape; Contracts & Cost Consultancy
Construction Value	: AED 258 Million
Project Status	: Ongoing

Etihad Rail – Stage 2, Package 2D

ROADS & UTILITIES DESIGN

Etihad Rail
Systra



Etihad Rail comprises a proposed railway network, linking freight facilities and passenger stations, and form a part of the planned Gulf Corporation Council (GCC) railway Network. It will run from Saudi Arabia border at Ghweifat in the west to the Northern Emirates and the East Coast. There will be a line running from Abu Dhabi to Al Ain, with intended connection into the Sultanate of Oman.

Etihad Rail Stage 2 Package 2D permanent way works extend over 120km from border between Sharjah & Dubai, up to Fujairah port. Project will link future freight facilities & passenger stations, part of GCC railway strategic network.

AEC was awarded the project for roads & highway design services for a number of crossing locations between the existing / proposed utilities network and the proposed Etihad Rail Alignment.

Key Services

- Roads & Highway Design for Fourteen (14) Locations.
- Utilities Protection, Relocation and Diversion.
- Stakeholder and NOCs Approvals (Sharjah, Fujairah and Ras Al Khaimah).

Location : UAE
Appointment : Roads & Utilities
Construction Value : AED 600 Million
Project Status : ongoing



Etihad Rail comprises a proposed railway network, linking freight facilities and passenger stations, and form a part of the planned Gulf Corporation Council (GCC) railway Network. It will run from Saudi Arabia border at Ghweifat in the west to the Northern Emirates and the East Coast. There will be a line running from Abu Dhabi to Al Ain, with intended connection into the Sultanate of Oman.

AEC was awarded Stage 2 Package 2F2 of the development that will connect the Etihad Rail network through to the port of Fujairah on the eastern seaboard. This project will link future freight facilities and passenger stations to form a part of the GCC strategic railway network.

Key Services

- Develop Road Design for E611 (excl the bridge and MSE wall structure).
- Design NOCs from all relevant authorities (RTA, DEWA, DM, etc.).
- Temporary Traffic Diversion.
- Prepare BoQ for roads and utilities networks & Value Engineering.
- Develop BIM for E611 road in relation to the roads and utilities networks.

Location : UAE
Appointment : Roads, Utilities & Bridges
Construction Value : AED 180 Million
Project Status : Ongoing

Stormwater Network in Dahan and Khuzam Areas

UTILITIES DESIGN

Government of RAK
Public Services
Department



The Government of Ras Al Khaimah has decided to improve and implement Storm Water System within two areas of concerns i.e. Dahan and Khuzam Areas. Both areas are fully built with residential and commercial developments including roads and exiting utilities.

AEC has been commissioned to undertake the design services of Stormwater Network.

Key Services

- Preliminary Study and development of Concept.
- Detail Design of Storm Water Network including design calculations, design drawings and technical specifications in Built and Non-Built Asphalt Roads.
- Secure Design NOCs and approval from authorities including RAK EPDA.
- Develop Implementation Strategy and Phasing.
- Prepare Construction Cost estimate.
- Develop Tender Documents and provide Tendering Services.
- Prepare a Geotechnical investigation scope of work.

Location : RAK, UAE
Appointment : Utilities
Construction Value : AED 50 Million
Project Status : Ongoing

Stormwater Network in Julfar and Shaebiat Rashid - Al Rams Areas

UTILITIES DESIGN

Government of RAK
Public Services
Department



The Government of Ras Al Khaimah has decided to improve and implement Storm Water System within two areas of concerns i.e. Julfar and Shaebiat Rashid – Al Rams Areas. Both areas are fully built with residential and commercial developments including roads and exiting utilities.

AEC has been commissioned to undertake the design services of Stormwater Network.

Key Services

- Preliminary Study and development of Concept.
- Detail Design of Storm Water Network including design calculations, design drawings and technical specifications in Built and Non-Built Asphalt Roads.
- Secure Design NOCs and approval from authorities including RAK EPDA.
- Develop Implementation Strategy and Phasing.
- Prepare Construction Cost estimate.
- Develop Tender Documents and provide Tendering Services.
- Prepare a Geotechnical investigation scope of works.

Location : RAK, UAE
Appointment : Utilities
Construction Value : AED 60 Million
Project Status : Ongoing

Pedestrian Link Bridge Connecting Emirates NBD Parking & Offices Buildings

Emirates NBD /
Kling Consult

BRIDGE DESIGN



The Pedestrian Link Bridge is located in Nad Al Shiba First Community in Dubai. The proposed structure will connect the under-construction Emirates NBD Parking Building on Plot no. 6184109 & the existing Emirates NBD Offices Building on Plots no. 6184115. The bridge main structural elements are steel structure box shape truss spanning between two building i.e. parking building & podium building.

AEC was commissioned to carry out the design of the bridge having total length of approximately 55m and width of 6.0m.

Key Services

- Detailed Design for Pedestrian Bridge.
- Obtain Authorities Approvals.
- Construction Supervision.

Location : Dubai, UAE
Appointment : Bridge
Construction Value : AED 8 Million
Project Status : Ongoing

Pedestrian Link Bridge Connecting Emaar Burj Crown Tower to Emaar Forte Tower at Burj Khalifa

EMAAR /
CRHI

BRIDGE DESIGN



The bridge is a pedestrian link that will connect between the existing Emaar Forte Tower on plot no. 3456899 and Emaar Burj Crown Tower (Plot 27 Residential Building) on plot no. 3450843, which are currently under construction. The bridge will connect the 2 (two) building at a level higher the existing ground allowing for the required under clearance on the existing road. The bridge main structural elements are steel structure box shape truss spanning between two building i.e. parking building & podium building.

AEC was commissioned to carry out the design of the bridge with an approximate length of 60m and widths of 6.0m

Key Services

- Detailed Design for Pedestrian Bridge.
- Obtain Authorities Approvals.
- Construction Supervision.

Location : Dubai, UAE
Appointment : Bridge
Construction Value : AED 9 Million
Project Status : Ongoing

R1029/01 - Three Pedestrian Bridges in Dubai

BRIDGE DESIGN & EOR SERVICES

KABRI
International /
RTA



Project R1029/1 is the development for the Latifa Bin Hamdan Street Contract 1, which is the Design and Build for three pedestrian bridges. The three pedestrian footbridges are as follows with their respected spans:

- Al Asayel Street Bridge - length of 48.5m;
- Al Asayel Street Bridge - length of 50.7m; and
- Latifa Bint Hamdan Street Bridge - length of 47.5m

Key Services

- Detailed Structural Design of Bridges.
- Engineer of Record.

Location : Dubai, UAE
Appointment : Bridge
Construction Value : AED 15 Million
Project Status : Completed



BackLite Media has been appointed as per the RTA contract in customizing and design signage's including construction along Sheikh Zayed Road (SZR) in Dubai. There are numerous signage locations (Assets) along SZR between World Trade Centre and Interchange 04, with a total of 26 signage locations comprising of new and existing.

AEC has been commissioned by BackLite to undertake the following key services:

Key Services

- Structural Design for the new signage.
- Structural Design Calculation Loads for the existing signage.
- Traffic Diversion Plan.
- Electrical Design for substation.
- Design Approvals and NOCs from RTA, DEWA and all other relevant authorities.
- Cost Consultancy and Tendering Services.
- Manufacturing Supervision.
- Construction Supervision.

Location : Dubai, UAE
Appointment : Structures & Utilities
Construction Value : AED 10 Million
Project Status : Ongoing

MBR Solar Park in Saih Al Dahal

TRAFFIC - LEVEL 1 TIS

DEWA



Dubai Electricity and Water Authority (DEWA) is implementing the Mohammed bin Rashid Al Maktoum Solar Park, which enhances the sustainable development of Dubai and supports the Dubai Clean Energy Strategy 2050 to make Dubai a global hub for clean energy and green economy. The strategy aims to provide 75% of Dubai's total power output from clean energy by 2050.

MBR Solar Park is the largest single-site solar park in the world based on the Independent Power Producer model. When completed, it will save over 6.5 million tonnes of carbon emissions annually.

MBR Solar Park consists of Solar Innovation Center, R&D Building, 3D Printed Lab and Hydrogen Plant Building, Solar Test Facilities, and Sub Stations with total built up area of 22,806 m², and generating 225 trips in the LT peak.

A level 1 TIS has been conducted and approved by the RTA.

Location	: Dubai, UAE
Appointment	: Traffic - Level 1 TIS
Construction Value	: Study
Project Status	: Completed

Marriott Hotel Resort

TRAFFIC CIRCULATION STUDY

Meinhardt



AEC was appointed for a five Star Beach Marriott Resort Hotel located on a reclaimed peninsula in Ras Al Khaimah. The proposed development shall comprise of a G+5 floors with a projected BUA of 36,000 m² and will accommodate 300 rooms. The trips generated development was 184 trips during the PM peak period.

AEC supported the Master Planning team and developed Circulation Study along with reports to support the application.

Location : Ras Al Khaimah, UAE
Appointment : Traffic Circulation Study
Construction Value : Study
Project Status : completed

Aggregate Dry Ports (ADP) Freight Facility, Package 2F2

Systra /
Etihad Rail

TRAFFIC IMPACT STUDY



Etihad Rail (ER) comprises a proposed railway network, linking freight facilities (FF) and passenger stations, and form a part of the planned Gulf Corporation Council (GCC) railway Network routing throughout the UAE Emirates.

AEC was awarded the Aggregate Dry Ports (ADP), one of five FF locations as part of the wider network of FF sites to be operated by ER, a proposed facility located within Ras Al Khaimah close to the E18. The facility will cater for the nearby quarries where commodities will come from and these are Tawyeen and Al Ghayl.

Key Services

- Estimate Trip Generation for Trucks from first principles.
- Assess internal circulation of trucks/ vehicular traffic and estimate queuing analysis for gate operations.
- Develop concept options and discuss with RAKM.
- Modelling analysis along the E18 for base and future scenarios.
- Preparation of Traffic Impact Study and obtain approval.

Location : Ras Al Khaimah, UAE
Appointment : Traffic Impact Study
Construction Value : AED 180 Million
Project Status : Ongoing



AEC was appointed by Dubai Sports City (DSC) Facilities Services to carry out a Traffic Circulation Study for a proposed one-way system between Road 64 and Road 65 of Canal West Zone in DSC and to address the traffic safety concerns of both students and residents in the study area.

Key Services

- Collect and review available TIS reports, land use information for the plots in the study area.
- Calculation of the expected vehicle trip generation for the vacant plots for a typical weekday in the AM, LT, and PM peak hour periods.
- Analysis of existing traffic conditions in AM, LT, and PM peak hour periods.
- Analysis of the expected traffic conditions after all the vacant plots are fully developed.
- Assessment of proposed one-way system with different scenarios.
- Assessment of the safety and parking issues of school and residents.

Location : Dubai, UAE
Appointment : Traffic Circulation Study
Construction Value : Study
Project Status : Completed

Meydan Horizon

ROADS, UTILITIES AND STRUCTURAL DESIGN

Meydan Group
LLC



Meydan Horizon is located within the Meydan Development to the East of Dubai-Al Ain/Ras Al Khor Roads Interchange. Meydan Horizon is approximately 180 hectares mixed used development that will accommodate over 72,000 people. The development was planned to be completed in two phases and that also includes 2km long canal including park open spaces. AEC was commissioned to undertake the design of roads and utilities network.

Key Services

- Concept Design for the two phases and phasing plans.
- Electrical Master Plan for Phases 1 & 2.
- Detailed Design of Roads Network.
- Detailed Design of Utilities including Sewage, Drainage, Water & Irrigation, Firefighting, Electrical, Street Lighting and Telecommunication Networks for Phase 1.
- Detailed Structural Design of Water Canal.
- Detailed Design of Utility Buildings, lifting stations, pumping stations and storage tanks.
- DEWA Electrical Design approval, NOC's and permits from all relevant authorities.
- Cost Consultancy and Tendering Services.

Location : Dubai, UAE

Appointment : Highways; Utilities; Structures; Contracts & Cost Consultancy

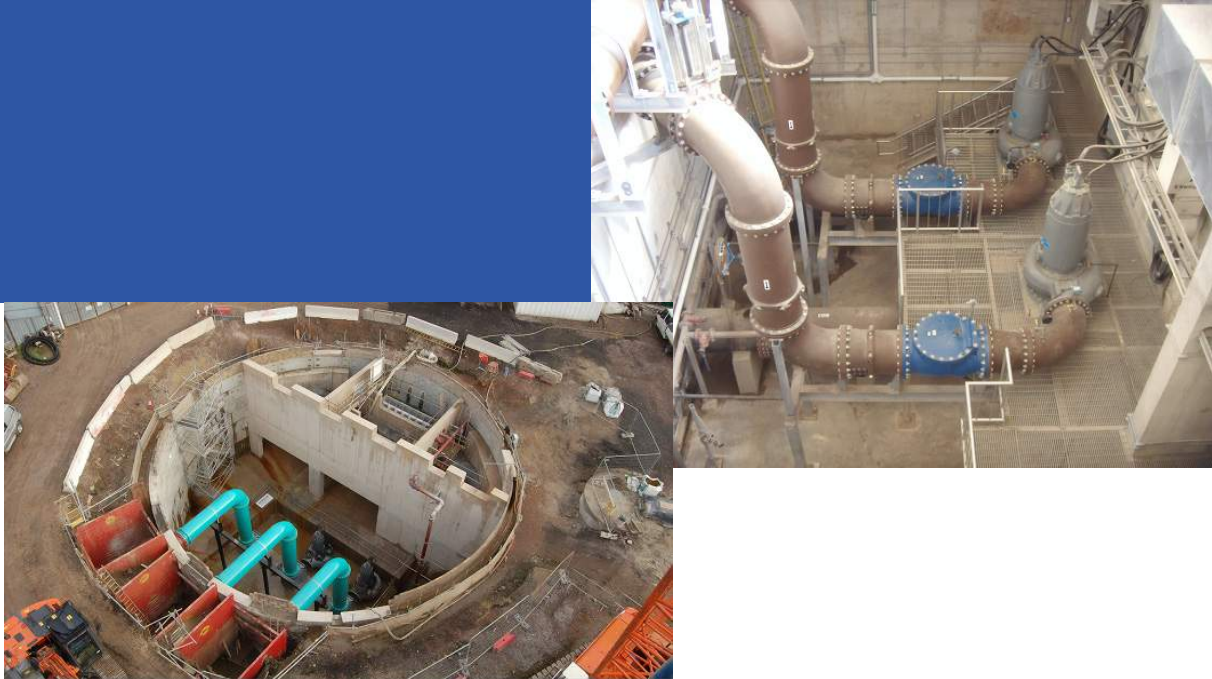
Construction Value : AED 222 Million (Phase 1)

Project Status : Completed

DS 197 - Sewerage Pumping Station

ARCHITECTURAL, STRUCTURAL & MEP DESIGN

Dubai Municipality



Dubai Municipality intends to construct a new sewerage pumping station within a plot area of 10,000m² located along Sheikh Mohammed Bin Zayed Road at Me'aisem First.

The project comprises six building structures including sewerage pumping station with capacity of 3.5 m³/s, electrical building, accommodation building, chiller plant, firefighting tanks, pump station and fuel tank.

AEC was commissioned to undertake the building design buildings and associated roads and utilities.

Key Services

- The Structural Design of the underground pump station at depth of 25m.
- The Architectural and Structural Design of the buildings.
- Firefighting and fire alarm system for the buildings.
- Design of Roads and Utilities.
- Building permits, DEWA Electricity approval and Design NOCs from all relevant authorities.
- Cost Consultancy and Tendering Services.

Location : Dubai, UAE

Appointment : Architecture; Structure; MEP; Highways & Utilities; and Contracts & Cost Consultancy

Construction Value : AED 40 Million

Project Status : Ongoing

Deira Islands A and B

ROADS & UTILITIES DESIGN & CONSTRUCTION SUPERVISION

Nakheel



The development comprises the construction of four islands (A,B,C & D) off the coast of Dubai. These islands 1500 hectares in size will have a population of 400,000 to inhabit the islands.

The four islands will be connected to each other via at grade roads and to the mainland via bridgess through Islands A & B. AEC was commissioned to utilize the Highways, Utilities and Construction Management Teams to provide the following services.

Key Services

- Concept Design of Roads & Utilities including Demand Calculations and Analysis for four Islands.
- Detailed Design for Road Networks and Utilities including Sewerage, Drainage, Water & Irrigation, Firefighting, Electrical, Street Lighting and Telecommunication Networks for Island A & B.
- Detail Design for Soil Improvement and Vibro Compaction for Island A & B.
- Concept Design improvements and upgrading of existing services at Al Khalej Road.
- Detailed Design of Utility Buildings, lifting stations, pumping stations and storage tanks.
- Design approvals, NOCs and permits from all relevant authorities.
- Cost Consultancy and Tendering Services.
- Construction Supervision for Phase 1 of Islands A & B.

Location : Dubai, UAE

Appointment : Highways; Utilities; Contracts & Cost Consultancy and Construction Management

Construction Value : AED 870 Million (Island A & B)

Project Status : Completed

Falcon City Of Wonders Project

ROADS & UTILITIES DESIGN

Falcon City of
Wonders LLC



Falcon City of Wonders Project will be occupying over 400 hectare off Sheikh Mohammed Bin Zayed Road and shall comprise the seven wonders of the world, commercial centers, a signature theme park, family centers, sports facilities, educational institutes, in addition to more than 5,500 residential units that vary in design, location and size.

AEC was commissioned to undertake the design of roads and utilities networks and buildings for several projects within Falcon City with the following key services undertaken:

Key Services

- Master Plan Evaluation including Utilities Demand Calculations and Analysis for Eastern Residence Development.
- Detailed Design for Road Networks and Utilities including Sewage, Drainage, Water & Irrigation, Firefighting, Electrical, Street Lighting and Telecommunication Networks for Eastern Residence Development and Community Parking.
- Detailed Design of Utility Buildings, lifting stations, pumping stations and storage tanks.
- Architectural and Structural Detail Design for Community Guard Houses and Advertising Sign Board (250m x 20m).
- Electrical Masterplan for the whole Falcon City of Wonders.
- Building permits, DEWA Electricity approval and Design NOCs from relevant authorities.
- Cost Consultancy and Tendering Services.

Location : Dubai, UAE

Appointment : Highways; Utilities Contracts & Cost Consultancy

Construction Value : AED 110 Million

Project Status : Completed

Al Khawaneej First (R-910)

ROADS & UTILITIES DESIGN & CONSTRUCTION SUPERVISION

Roads & Transport
Authority (RTA)



AEC was commissioned by RTA for Project R910 Roads in Al Khawaneej First. The project consists of the design and construction supervision of approximately 70km of internal roads within Al Khawaneej First Residential Area, Community No 281.

Key Services

- Detailed Design for Road Networks, Site Grading and Utilities including Drainage, and Street Lighting Network as well as the protection of existing networks and provision of future ducts.
- Design NOCs and permits from all relevant authorities.
- Cost Consultancy and Tendering Services.
- Construction Supervision.

Location : Dubai, UAE

Appointment : Highways; Utilities; Contracts & Cost Consultancy and Construction Management

Construction Value : AED 100 Million

Project Status : Completed

Meydan Diamond Business Park

ROADS & UTILITIES DESIGN & CONSTRUCTION SUPERVISION

Meydan Group
LLC



Meydan Diamond Business Park (Meydan Avenue) has a total area of 110 hectares and comprises of mixed-use plots. It is located along Meydan Road and opposite to Meydan Hotel.

AEC was commissioned to undertake the design of roads and utilities network.

Key Services

- Concept Design for Roads and Utilities including Demand Calculations.
- Detailed Design of Road Networks and Utilities including Sewage, Drainage, Water & Irrigation, Firefighting, Electrical, Street Lighting and telecommunication Networks.
- Detailed Design of Utility Building, lifting stations, pumping stations and storage tanks.
- Design Approvals, NOCs and permits from all relevant authorities.
- Cost Consultancy and Tendering Services.
- Construction Supervision.

Location : Dubai, UAE

Appointment : Highways; Utilities; Contracts & Cost Consultancy and Construction Management

Construction Value : AED 102 Million

Project Status : Completed

Al Sufouh Tram

HIGHWAYS & UTILITIES DESIGN

Roads & Transport
Authority (RTA)



Al Sufouh Tram Project is owned by RTA and constructed as a design build project. It is 14km at grade tram system that runs along Al Marsa Road and Al Sufouh Road connecting Dubai Marina, Palm Jumeirah, Media City and Knowledge Village to the Dubai Metro Red Line along Sheikh Zayed Road.

AEC was commissioned for the following key services:

Key Services

- Develop tram alignment.
- Develop Roads Improvement.
- Design for utilities network relocation.

Location : Dubai, UAE
Appointment : Highways & Utilities
Construction Value : AED 180 Million for roads & utilities works
Project Status : Completed

Route 2020 Dubai Metro Red Line HIGHWAYS & UTILITIES DESIGN

Roads & Transport
Authority (RTA)



RTA is developing a Metro Link between the existing Dubai Metro Red Line at Nakheel and Harbour Station and the Expo 2020 site near Al Maktoum International Airport. The connection is 14km of track of which 11km is elevated and 3km is underground. Once developed the Metro Link will provide seven stations.

AEC was commissioned to undertake the following key services:

Key Services

- Redesign the roads network along the tram alignment.
- Develop the integration of the proposed metro stations with the surrounding road networks and public transit systems including the access, drop off, parking lots and bus and taxi stops.

Location : Dubai, UAE
Appointment : Highways & Utilities
Construction Value : AED 220 Million for roads & utilities works
Project Status : Completed

Mohammed Bin Rashid Al Maktoum City - District 11

ROADS & UTILITIES DESIGN & CONSTRUCTION SUPERVISION

Meydan Group
LLC



Mohammed Bin Rashid Al Maktoum City District 11 is located on a 330 hectare plot of land at the corner of Al Ain Road and Sheikh Mohammed Bin Zayed Highway and divided into several parcels which include residential gated communities, mixed use plots, schools & nurseries, retail shops, neighbourhood parks and Jumma mosque.

AEC was commissioned to design the internal roads and utilities networks for Parcel A, C, D, J and L and the external arterial connecting between these parcels and the RTA network.

Key Services

- Master Plan Evaluation and concept design for roads and utilities of District 11.
- Detailed Design for Road Networks and Utilities including Sewerage, Drainage, Water & Irrigation, Firefighting, Electrical, Street Lighting and Telecommunication Networks.
- Detailed Design of Utility Building, lifting stations, pumping stations and storage tanks.
- Detailed Design of Detention Pond.
- Building permit, DEWA Electricity approval and Design NOCs from all relevant authorities.
- Cost Consultancy and Tendering Services.
- Construction Supervision.

Location : Dubai, UAE

Appointment : Highways; Utilities; Contracts & Cost Consultancy and Construction Management

Construction Value : AED 480 Million

Project Status : Ongoing

Mohammad Bin Rashid Al Maktoum City - District 1

Meydan Sobha

BICYCLE & JOGGING TRACKS, TUNNELS, ROADS & UTILITIES DESIGN & CONSTRUCTION SUPERVISION



District 1 is part of Mohammad Bin Rashid City located to the East of Al Khail Road / Meydan Road Interchange and will be developed in four phases on total site area of 400 hectares. High end residential villas and mansions, leisure and sport facilities, schools & nurseries, mosque, parks and playgrounds, bicycle and jogging tracks and Central Crystal Lagoon.

AEC was commissioned to undertake the design and supervision of roads and utilities networks.

Key Services

- Concept Design of Roads and Utilities for four phases and phasing plans.
- Detailed Design for Bicycle and Jogging Tracks.
- Detailed Design for jogging and cyclist tunnels.
- Roads and Utilities including Sewerage, Drainage, Water & Irrigation, Firefighting, Electrical, Street Lighting and Telecommunication Networks for phases 1 & 2.
- Detailed Design of Utility Buildings, lifting stations, pumping stations and storage tanks.
- DEWA Electricity approval, Design NOC's and permits from all relevant authorities.
- Cost Consultancy and Tendering Services.
- Construction Supervision.

Location : Dubai, UAE

Appointment : Highways & Tunnels; Utilities; Contracts & Cost Consultancy and Construction Management

Construction Value : AED 660 Million (Phase 1 & 2)

Project Status : Completed

Design of Four Bridges in Ras Al Khaimah

BRIDGE DESIGN

RAK Public Works
and Services
Department



RAK Public Works and Services Department planned to construct bridges at four major congested junctions in RAK to enhance the traffic flow.

These were located at Taxi Station Junction, Al Manar Junction, Al Jazaah Junction and the Ittihad Road / Airport Road Junction.

AEC was commissioned to undertake the following key services:

Key Services

- Detailed Structural Design of Bridges.
- Coordination with Authorities & Stakeholders.

Location : Ras Al Khaimah, UAE

Appointment : Bridges Design

Construction Value : AED 120 Million

Project Status : Completed

Ten Bridges at Abu Al Abyadh Island

BRIDGE DESIGN

Ministry of
Presidential
Affairs



Ministry of Presidential Affairs intended to construct 10 Bridge Crossing over man-made water canals within Al Abyadh Island, Abu Dhabi to provide the connectivity between both sides of the canal.

AEC was commissioned to design these bridges with an average span of 50 - 150m and widths of 10-12m.

Key Services

- Detailed Design for Bridges.
- Detailed Design of Associated Road works and Street Lighting Network.
- Coordination with Authority & Stakeholders.

Location : Abu Dhabi, UAE
Appointment : Highways & Bridges
Construction Value : AED 98 Million
Project Status : Completed

Meydan Heights Villas

**ROADS & UTILITIES DESIGN, LANDSCAPING DESIGN
& CONSTRUCTION SUPERVISION**

**Meydan Group
LLC**



Meydan Heights Villas part of the overall Meydan Development is a residential community of 528 contemporary homes built over 28 ha.

AEC was commissioned to carry out the following key services.

Key Services

- Master Plan Evaluation.
- Detailed Design for Road Networks and Utilities including Sewage, Drainage, Water & Irrigation, Firefighting, Electrical, Street Lighting and Telecommunication Networks.
- Detailed Design of Utility Building, lifting stations, pumping stations and storage tanks.
- Detailed Design for Landscape.
- Building permits, DEWA Electricity approval and Design NOCs from all relevant authorities.
- Cost Consultancy and Tendering Services.
- Construction Supervision.

Location : Dubai, UAE

Appointment : Highways; Utilities; Landscaping; Contracts & Cost Consultancy and Construction Management

Construction Value : AED 100 Million

Project Status : Completed

Meydan Racecourse Villas

ROADS & UTILITIES DESIGN & CONSTRUCTION SUPERVISION

Meydan Group
LLC



Meydan Racecourse Villas is located along Nad Al Sheba Road within the Meydan Development. It is a gated community of total area 35 ha and includes residential villas and a central water body.

AEC was commissioned to carry out the following key services:

Key Services

- Master Plan Evaluation.
- Detailed Design for Road Networks and Utilities including Sewerage, Drainage, Water & Irrigation Works, Firefighting, Electrical, Street Lighting and Telecommunication Networks.
- Detailed Design of Utility Building, lifting stations, pumping stations and storage tanks.
- Building permits, DEWA Electricity approval and Design NOCs from all relevant authorities.
- Construction Supervision.

Location : Dubai, UAE

Appointment : Highways; Utilities; Contracts & Cost Consultancy and Construction Management

Construction Value : AED 32 Million

Project Status : Completed

Mosque in Al Sufouh Second

ARCHITECTURAL, STRUCTURAL, LANDSCAPING DESIGN & CONSTRUCTION SUPERVISION

Islamic Affairs &
Charitable Activities
Department



AEC was commissioned to design and provide construction supervision for a mosque with a total built up area of 1,200m² (including facilities and accommodation) to be located in Al Sufouh Second Community on Plot No. 3820761. The Fatimi Style Mosque will provide two levels men's halls to accommodate 600 worshippers and a ground level halls to serve 60 women worshippers.

Key Services

- Design of Architectural, Structural, MEP, Firefighting System.
- Design of Soft and Hard Landscaping.
- Design of the Mosque Access, Parking and Utilities Network.
- Design of the tie in External Roads & Utilities Network.
- Building permits and Design NOCs from the relevant authorities.
- Cost Consultancy and Tendering Services.
- Construction Supervision.

Location : Dubai, UAE

Appointment : Building, Roads, Utilities MEP; Landscaping; Contracts & Cost Consultancy and Construction Management

Construction Value : AED 7 Million

Project Status : Ongoing

Jumeirah Central – Phase 1

ROADS & UTILITIES DESIGN & CONSTRUCTION SUPERVISION

Jumeirah Central
Group LLC



Jumeirah Central Development is located in Sufouh First Community opposite to Emirates Mall and covers an area of 160 ha. The development will create a new international mixed used district in Dubai comprising residential, hotels, offices, retail, hospitals, schools and leisure and entertainment.

AEC was commissioned to provide the following key services for Phase One of Jumeirah Central.

Key Services

- Detailed Design for Roads & Utilities including Sewage, Drainage, Water & Irrigation, Firefighting, Electrical, Street Lighting and Telecommunication Networks.
- Detailed Design of Utility Building, lifting stations, pumping stations and storage tanks.
- Detailed Design of Pedestrian Underpass.
- Building Permits & Design NOCs from the relevant authorities.
- Cost Consultancy and Tendering Services.
- Construction Supervision.

Location : Dubai, UAE

Appointment : Highways; Utilities; Contracts & Cost Consultancy and Construction Management

Construction Value : AED 150 Million

Project Status : Ongoing

Meydan Gated Community

ROADS & UTILITIES DESIGN & CONSTRUCTION SUPERVISION

Meydan Group
LLC



Meydan Gated Community is built over 51 ha and will accommodate luxury villas and town houses. The gated community occupies the southern extension of the Meydan Development Master Plan Area next to the Grandstand.

AEC was commissioned to provide the following key services:

Key Services

- Master Plan Evaluation.
- Detailed Design for Road Networks and Utilities including Sewage, Drainage, Water & Irrigation, Firefighting, Electrical, Street Lighting and Telecommunication Networks.
- Detailed Design of Utility Building, lifting stations, pumping station and storage tanks.
- Building permits, DEWA Electricity approval and Design NOCs from all relevant authorities.
- Cost Consultancy and Tendering Services.
- Construction Supervision.

Location : Dubai, UAE

Appointment : Highways and Utilities; Contracts & Cost Consultancy and Construction Management

Construction Value : AED 78 Million

Project Status : Completed

Cluster T - Car Park Expansion Jumeirah Lake Towers

ARCHITECTURE, STRUCTURE, MEP &
CONSTRUCTION SUPERVISION

Dubai Multi
Commodities
Centre (DMCC)



Jumeirah Lake Towers (JLT) site in west of Dubai covers 240 hectares with 25 clusters, each cluster comprising of three privately owned towers. The project is to expand the parking space in Cluster T by constructing two additional single story car parking to the existing promenade car parking level.

AEC was commissioned to carry out the following services:

Key Services

- Structural analysis of existing structure.
- Develop Detailed Design for Architectural, Structural, MEP, Utilities, Systems and Fire & Life Safety.
- Building permit, Design approvals and NOCs from all relevant authorities.
- Cost Consultancy & Tendering Services.
- Construction Supervision.

Location : Dubai, UAE

Appointment : Architecture; Structure; MEP; Utilities; Contracts & Cost Consultancy and Construction Management.

Construction Value : AED 7 Million

Project Status : Ongoing

R881/3A and R881/3B

TRAFFIC MANAGEMENT & DETOUR PLANS DEVELOPMENT

Roads & Transport
Authority (RTA)



AEC was appointed to prepare the Traffic Management & Detour Traffic Plans for RTA Project R881/3A and R881/3B which is part of the parallel roads project.

Key Services

- Traffic Count Surveys.
- Preparation of phased plans to account for contractor staged construction.
- Maintaining traffic flows at an acceptable level of service as well as access to the surrounding area.

Location : Dubai, UAE
Appointment : Traffic Detour Plans
Construction Value : AED 850 Million (Project Value)
Project Status : Completed

Baynoonah Street, Abu Dhabi

TRAFFIC MANAGEMENT & DETOUR PLANS DEVELOPMENT

Department of
Transport (DOT)



Department of Transport has developed the widening and upgrading of Baynoonah Street in Abu Dhabi City. The project has a total road length of 7 km starting from Emirates Palace Hotel and includes two vehicular tunnels.

AEC was commissioned to prepare the detour plans to allow the contractor to proceed with the construction activities.

Key Services

- Traffic Count Surveys.
- Preparation of phased plans to account for contractor staged construction.
- Maintaining traffic flows at an acceptable level of service as well as access to the surrounding area.

Location	: Abu Dhabi, UAE
Appointment	: Traffic Detour Plans
Construction Value	: AED 650 Million (Project Value)
Project Status	: Completed

Palace Roundabout Improvement in Ras Al Khaimah

BRIDGE, HIGHWAYS & UTILITIES DESIGN

RAK Public Works
and Services
Department



Ras Al Khaimah Palace Roundabout Improvement Project consists of increasing the number of travel lanes from two to three lane for each side of Sheikh Rashid Bin Said Road and upgrading the existing Palace Roundabout by introducing a new 3 span, 115m length, six lane bridge crossing the Roundabout to improve the traffic flow and enhance the traffic management of Al Dhait North and Al Dhait South.

AEC was commissioned to undertake the following key services:

Key Services

- Traffic Study.
- Detail Design of the Bridge.
- Detail Design of the Roads and Utilities Network.
- Design Approvals and NOCs from all relevant authorities.
- Cost Consultancy Services and Tendering Services.

Location : Ras Al Khaimah, UAE
Appointment : Bridge; Highways; Utilities; Constructs & Cost Consultancy
Construction Value : AED 90 Million
Project Status : Ongoing

Clock Roundabout Improvement in Ras Al Khaimah

BRIDGE, HIGHWAYS & UTILITIES DESIGN

RAK Public Works
and Services
Department



Ras Al Khaimah Clock Roundabout is located at the intersection between Sheikh Muhammad Bin Salem Road and Khuzam Road. The project consists of upgrading the existing intersection to cater the traffic flow, improve the traffic movements and enhance the traffic circulation. The improvement includes introducing 3 span, 115m long, six lane bridge along Sheikh Muhammad Bin Salem Road, widening Khuzam Road, installing new traffic signal and developing a new road connecting Khuzam Road and Nahda Road.

AEC was commissioned to carry out the following key services:

Key Services

- Traffic Study.
- Detail Design of the Bridge.
- Detail Design of the Roads and Utilities Networks.
- Design Approvals and NOCs from all relevant authorities.
- Cost Consultancy Services and Tendering Services.

Location : Ras Al Khaimah, UAE
Appointment : Bridge; Highways; Utilities; Contracts & Cost Consultancy
Construction Value : AED 70 Million
Project Status : Completed

Dubai Lagoon Development

ROADS & UTILITIES DESIGN

Schon Properties



Dubai Lagoon Development is located within Dubai Investment Park (DIP). The Development comprises of 38 residential buildings constructed around a lagoon and having a common podium.

AEC was commissioned to undertake the design of the roads and utilities network.

Key Services

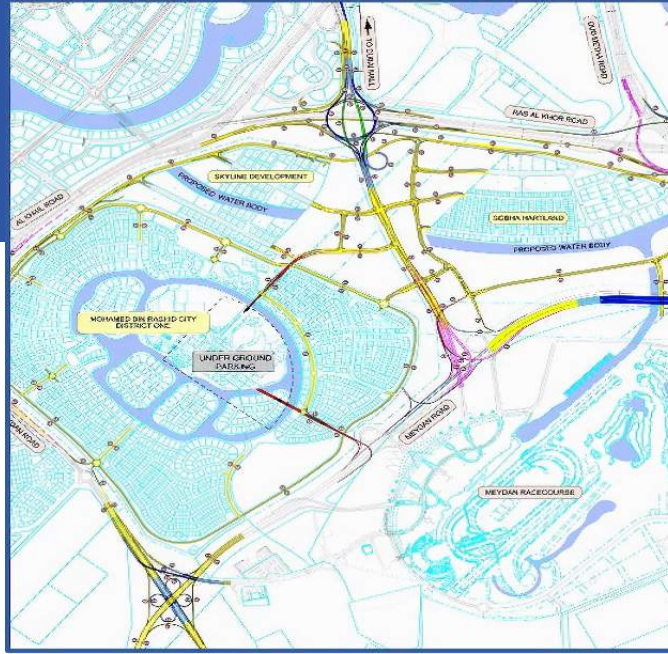
- Evaluation of the Master Plan.
- Detail Design for development access, internal roads and utilities network including storm water drainage and street lighting.
- Design approvals and NOCs from all relevant authorities.
- Cost Consultancy and Tendering Services.

Location : Dubai, UAE
Appointment : Highways & Utilities; Contracts & Cost Consultancy
Construction Value : AED 24 Million
Project Status : Completed

Meydan Development Access Strategy

TRAFFIC & HIGHWAYS STUDY

Meydan Group
LLC



AEC was commissioned to develop the access and roadway network associated with the Traffic Master Plan for the Mohammed Bin Rashid Al Maktoum City District 1, Sobha Hartland and Skyline Developments. The study also involved the integration of the proposed access to RTA road networks which include Al Ain Road, Ras Al Khor Road, Al Khail Road, Meydan Road and Financial Center Road.

Key Services

- Develop roadway network associated with traffic model.
- Develop access strategy to the whole developments.
- Develop improvements for the existing roads, intersections and interchanges.

Location : Dubai, UAE
Appointment : Highways and Traffic
Construction Value : Study
Project Status : Completed



The proposed 2,000 ha development includes the development of several man-made islands off the coast of Jumeirah in Dubai to cater for a population of 50,000 to 60,000 residents.

AEC was commissioned to undertake the conceptual design, access strategy and connection of the islands to the mainland.

Key Services

- Develop roadway network associated with traffic model.
- Develop access strategy to whole developments.
- Develop Improvements for the existing roads, intersections and interchanges.

Location : Dubai, UAE
Appointment : Traffic & Highways
Construction Value : Study
Project Status : Completed

Meydan Grandstand Parking

TRAFFIC & HIGHWAYS STUDY

Meydan Group
LLC



AEC was commissioned to undertake a Traffic and Highways Study for a proposed Two level parking garage structure of 8,600 parking spaces to serve Meydan Racecourse Grandstand during the annual Dubai World Cup Race.

Key Services

- Evolution of parking access roads and internal circulation.
- Developing assigned parking areas and specific access strategy for different users.
- Develop way finding schemes.

Location : Dubai, UAE
Appointment : Traffic & Highways
Construction Value : Study
Project Status : Completed

Meydan Racecourse Water Body

LAKE & LANDSCAPING DESIGN AND CONSTRUCTION SUPERVISION

Meydan Group
LLC



The water body of 30,000 m² area is located within Meydan Racecourse Villa Development with a proposal to create a neighborhood park to service the residents with the lake as main component. The lake has two fountains, a surrounding walkway and pathway connections across the park to provide access from roads and the Sikkas.

AEC was commissioned to undertake the design of the lake, landscaping design and supervision.

Key Services

- Develop site grading and lake reshape.
- Detail Design of the lake including side slopes, lake bed, drainage overflow and lighting network.
- Design of the fountain network including pump station and associated architectural, structural and MEP Works.
- Design of softscape and hardscape and associated irrigation network.
- Design approvals & NOCs, Building Permit and DEWA electricity approval.
- Cost Consultancy and Tendering Services.
- Construction Supervision.

Location : Dubai, UAE

Appointment : Lake and Landscaping Design; Contracts & Cost Consultancy and Construction Management

Construction Value : AED 18 Million

Project Status : Completed

Detached Retail Units Jumeirah Lake Towers

ARCHITECTURE, STRUCTURE, MEP &
CONSTRUCTION SUPERVISION

Dubai Multi
Commodities
Centre (DMCC)



Jumeirah Lake Towers (JLT) site in west of Dubai covers 240 hectares with 25 clusters, each cluster comprising of three privately owned towers. The project is for the Design and Construction Supervision services for ETS rooms, detached retail units and associated utilities network at eight clusters.

AEC was commissioned to carry out the following services:

Key Services

- Design of Eight ETS electromechanical works and systems
- Structural, Architectural & MEP Design for eight ETS Rooms.
- Facade design for twelve retail units.
- Design connections between external networks and retail units for potable water, fire fighting, electrical, & telecom services.
- Sewerage Holding Tanks and Lifting Stations to serve retail units.
- Building permit, DEWA Electricity approval and Design NOCs from all relevant authorities.
- Tender Documents and Tendering Services.
- Construction Supervision.

Location : Dubai, UAE

Appointment : ETS Electromechanical; Architecture; Structure; MEP; Utilities; Contracts & Cost Consultancy and Construction Management.

Construction Value : AED 20 Million

Project Status : Ongoing

The Fields - Mohammed Bin Rashid Al Maktoum City District 11

ROADS & UTILITIES DESIGN

G & Co.



The Fields gated community has a total site area of 43 hectares with plans for 1,000 town houses and the associated public amenities to be developed on Parcel B of Mohammed Bin Rashid Al Maktoum City - District 11. The development is located to the west of Sheikh Mohammed Bin Zayed Road / Dubai -Al Ain Road Interchange.

AEC was commissioned to undertake the following key services:

Key Services

- Master Plan Evaluation.
- Detailed Design for Roads & Utilities including Sewerage, Drainage, Water & Irrigation, Firefighting, Electrical, Street Lighting and Telecommunication Networks.
- Detailed Design of Utility Building, lifting station, pump stations and storage tanks.
- Building permit, DEWA Electricity approval and design NOCs from all relevant authorities.
- Cost Consultancy & Tendering Services.

Location : Dubai, UAE
Appointment : Highways & Utilities; Contracts & Cost Consultancy
Construction Value : AED 125 Million
Project Status : Completed

Grand Views

ROADS & UTILITIES DESIGN

G & Co.



Grand Views Development is located in Meydan Development Master Plan on site area of 32 hectares. The development is a gated community comprising of residential villas and public amenities such as clubhouse, mosque, park and shops.

AEC was commissioned to carry out the following key services:

Key Services

- Master Plan Evaluation.
- Detailed Design for Roads & Utilities including Sewerage, Drainage, Water & Irrigation, Firefighting, Electrical, Street Lighting and Telecommunication Networks.
- Detailed Design of Utility Building, lifting station, pump stations and storage tanks.
- Building permit, DEWA Electricity approval and design NOCs from all relevant authorities.
- Cost Consultancy & Tendering Services.

Location : Dubai, UAE

Appointment : Highways & Utilities; Contracts & Cost Consultancy

Construction Value : AED 100 Million

Project Status : Completed

Jumeirah Lake Towers Car Park

BUILDING, REMEDIAL WORK, & CONSTRUCTION SUPERVISION

Dubai Multi
Commodities
Centre (DMCC)



The Jumeirah Lake Towers (JLT) site lies to the west of Dubai centre and covers 240 hectares in area. There are 25 Clusters A-Y within JLT with each cluster comprising of three privately owned towers. The proposed works are in relation to parking facilities across JLT development at concourse level structures. DMCC has appointed a contractor for the replacement of road traffic joints, repairs at footways and building connections, injection and screed repairs and removal and replacement of traffic deck coating.

AEC has been appointed to provide overall supervision for the contractor's works.

Key Services

- Contract Administration & Construction Supervision.
- Tendering Services.

Location : Dubai, UAE
Appointment : Construction Management
Construction Value : AED 20 Million
Project Status : Ongoing

Palm Jumeirah - Entrance Interchange Modifications

BRIDGE, ROADS & UTILITIES DESIGN

Nakheel



As part of Nakheel securing access to Jumeirah Gate Tower Project, Nakheel have retained Systra / AEC to study and design of the existing link to Palm Jumeirah Island from Al Sufouh Road. AEC were tasked to prepare the Concept Design as well as prepare the Detailed Design for Road and Utilities part of the project along with the related BOQ and Project Specifications.

Key Services

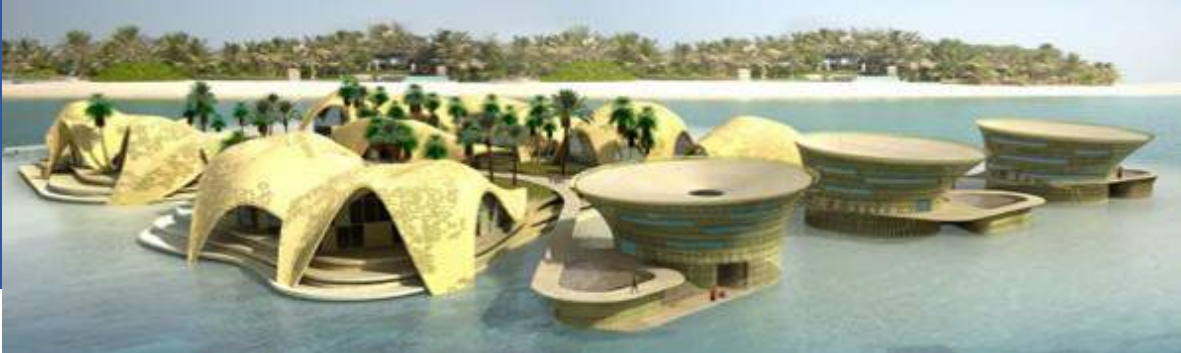
- Traffic Study.
- Detail Design of the Bridge.
- Detail Design of the Roads and Utilities Networks.
- Design Approvals and NOCs from all relevant authorities.
- Cost Consultancy Services and Tendering Services.

Location : Dubai, UAE
Appointment : Bridge; Highways & Utilities
Construction Value : AED 78 Million
Project Status : Completed

Taiwan Island Villa Design

STRUCTURAL & UTILITIES DESIGN

Rajja
Development



Taiwan Island is one of any manmade islands that form the World Island at Dubai Offshore. The Island to be developed as an exclusive Residential / Resort area housing 12 exotic villas.

AEC worked closely with the Project Italian Architect to provide all the design drawings and all the Infrastructure works associated with the Island Development acknowledging DM / Nakheel requirements to have zero discharges into the gulf. AEC works included villa structural design, stormwater collections system, sewerage collection and treatment, recycled water facility, firefighting, marine connections point and electrical generators and diesel tanks.

.Key Services

- Detailed Structural Design.
- Detailed Design for utilities network including stormwater collections system, sewerage collection and treatment, recycled water facility, firefighting, marine connections point and electrical generators and diesel tanks.

Location : Dubai, UAE
Appointment : Structure and Utilities
Construction Value : AED 36 Million
Project Status : Completed

Taiwan Island - Villa Alternative Architectural Design

ARCHITECTURAL CONCEPT DESIGN

Rajja
Development



Taiwan Island is one of any manmade islands that form the World Island at Dubai Offshore. The Island to be developed as an exclusive Residential / Resort area housing 12 exotic villas. AEC works closely with the Project Italian Architect to provide all the design drawings and all the Infrastructure works associated with the Island Development acknowledging DM / Nakheel requirements to have zero discharges into the gulf. AEC have developed an alternative design for the villas to individualize the villas and provide a modeling and contemporary theme.

Key Services

- Develop architectural concept design

Location : Dubai, UAE
Appointment : Architecture and Structure
Construction Value : Study
Project Status : Completed

Abu Dhabi Airport - New Terminal Access Strategy

TRAFFIC & HIGHWAYS STUDY

Abu Dhabi Airports Company (ADAC)



ADAC have retained M/s ARUP to prepare a Traffic Master Plan for Abu Dhabi Airport to address the impact of the New Planned Terminal on the adjacent and surrounding road networks. AEC have been retained by the Project Consultant to prepare the Concept Design for the New Interchange planned to provide access for the New Terminal as well as modifications of the existing interchange to the existing terminal.

Key Services

- Develop roadway network associated with traffic model.
- Develop access strategy for the new terminal.
- Develop improvements for the existing roads and interchanges.

Location : Abu Dhabi, UAE
Appointment : Traffic and Highways
Construction Value : Study
Project Status : Completed

Palm Deira Traffic Master Plan

TRAFFIC & HIGHWAYS STUDY

Nakheel



AEC as part of Consortium was commissioned to develop a strategic transportation model to provide Traffic Master Plan and Strategic Access to the Palm Deira project utilizing all modes of transportation including highways, metro, public transport and water transit systems.

Key Services

- Develop roadway network associated with Strategic Model.
- Develop access strategy plans to Palm Deira Islands.
- Develop upgrades to existing interchanges.

Location : Dubai, UAE
Appointment : Traffic & Highways
Construction Value : Study
Project Status : Completed

Our Clients





هيئة الطرق والمواصلات
ROADS & TRANSPORT AUTHORITY



UNITED ARAB EMIRATES
MINISTRY OF INFRASTRUCTURE
DEVELOPMENT

هيئة كهرباء ومياه دبي
Dubai Electricity & Water Authority



الهيئة الاتحادية للكهرباء والماء
Federal Electricity & Water Authority





دائرة الشؤون الإسلامية والعمل الخيري
Islamic Affairs & Charitable Activities Department





AQLEH Engineering Consultant

Suite 406, Building No.12, Bay Square, Marasi Drive,
Business Bay, P.O. Box 214060
Dubai, UAE

T +971 4 368 6364

F +971 4 368 6412

www.aqleh.com